



June 2021 Newsletter

Dear Friends,

As a community, you have helped us make a big difference during this extraordinary year. Despite the circumstances, the community continues to provide hope in all its intangible and tangible forms, ensuring safe and stable shelter, reliable meals, and most importantly life transforming support. Our entire team and Inn community, that's you, make all of this possible!

Our Development team members are the behind-the-scenes champions of the Bethlehem Inn mission, vision, goals, outreach, volunteering, donor stewardship, growth opportunities, and more. It is our pleasure to welcome and introduce two new staff members, Jordon our Volunteer Resource Coordinator and Stephanie our Development Specialist. Please join us as we welcome them to the team!

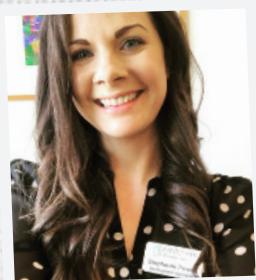


Welcome Jordon Walker, our Volunteer Resource Coordinator

"Hello there! Becoming a part of the Bethlehem Inn community has been an absolutely splendid experience. I'm thankful to have the opportunity to work with the community, with coworkers, and with countless more whose hearts so obviously overflow with kindness and generosity. Feel free to call or email me at any time to learn more about how to get involved."

Welcome Stephanie Powell, our Development Specialist!

*"What drew me to the Inn was the Inn's incredible mission, **transforming lives together through shelter, help, and hope**. It's the people, compassion, and dedication that are at the heart of this organization. Each and every day I see my fellow team members walking the walk, the living embodiment of our mission. I am grateful to be a part of a truly caring and extraordinary group of people."*



We are both honored to join the Bethlehem Inn community. It is truly awe-inspiring to work alongside all of you. Your compassion and dedication are the heart of this organization; you make it possible to help and support people in crisis. Thank you for welcoming us!

In Community,

Jordon, volunteer@bethleheminn.org, 541-322-8768 Ext. 11

Stephanie, stephanie@bethleheminn.org, 541-322-8768 Ext. 16



It's Not Just *What We Do* It's *How We Do It Together*

Thank you for being there during the challenges and uncertainty that we have all faced this past year! In the last 12 months, you have helped provide *shelter, help, and hope* to people who needed it the most. This has all been made possible because of your compassion. *Together* we served as a shining beacon of hope in meeting the needs of our most vulnerable community members. *Together*, we are TRANSFORMING lives in spite of the pandemic.

We are honored to share that the compassionate giving of individual donors represented over 65% of the Inn's revenue last year. Your generous giving allows us to continue to carry out the Inn's mission.

You helped residents have the opportunity to stay at the Inn for longer periods of time: 79 Days on Average! (April 2020-March 2021)

A longer stay at the Inn during the pandemic gave people in crisis access to safe and stable housing. Bethlehem Inn followed all State and CDC health and safety guidelines. Thanks to you, the Inn managed a fast-paced pivot to keep residents and staff safe through increased sanitization and social distancing. Supporters donated PPE, home-made face coverings, cleaning supplies and shared critical resources and expertise. Because of increased health and safety measures, residents were able to maintain their physical health and well-being during the length of their stay.



You helped provide access for longer stays of safe shelter, which allowed people to step out of crisis mode and focus on making it to work, to school, to doctor's appointments, connecting to support systems, and applying for housing. Children were able to stay connected to their school district and all residents don't have to worry about their basic needs.

Accomplishing goals through case management at the Inn! You helped us to provide 653 total case management meetings! (April 2020-March 2021)



With your support, weekly case management meetings and regular staff interactions helped residents get assistance in difficult situations. With action plan goal setting and general resource connections, staff can gain a deeper understanding of the importance of advocating for residents.

During case management, residents meet with program staff to set life-transforming goals. Individually tailored goals are set to improve safety, wellness, and living situations. Staff meet continuously with residents to

assist them in creating and accomplishing their goals. Through case management, individuals and families are set up for success with tools and resources as they build their futures.

Your donations have provided many residents *hope-filled* and *life-transforming* opportunities and the empowerment to work towards self-sufficiency. <https://bethleheminn.org/donate/donation-form/>

Bethlehem Inn is *Expanding* to the Redmond Community!



The Inn is honored to have the opportunity to establish the first permanent emergency shelter in Redmond, which will include best-practice case management services in a trauma-informed environment. With an average 5-week stay, Bethlehem Inn demonstrates that a majority of individuals engaged in services are able to stabilize and transition into stable housing.

The Redmond location will shelter unhoused individuals and serve as the city's first year-round shelter. Thanks to grant funding from Project Turnkey and the Oregon Community Foundation, the Redmond Bethlehem Inn is projected to open this summer and will initially serve an estimated 25 individuals/night.



Rebeckah's *Success* is made possible by YOU!

Imagine being at a place in your life where time at a homeless shelter became "...the most beautiful thing that has happened to me." Rebeckah didn't imagine it. She lived it. "I had nowhere to go, nowhere to stay. I was clean and sober. But my kids and I were homeless." Rebeckah had fled domestic violence in California and returned to her home state, Oregon. She was battling alcohol and drugs and then got a DUI. The state had returned her children to her and Rebeckah had started walking the long walk to a stable life but needed shelter, help and hope. Enter Bethlehem Inn.



Rebeckah says, "All my needs were met. Every question had an answer." She got a good job. She and the kids were safe. There were clothes to wear, healthful meals to eat, a chance to find some peace and grow strong. Rebeckah says, "There was love and support from genuinely caring people." She'd begun her search for housing before arriving at BI and that effort, with help from Inn staff has paid off in the form of a clean, safe apartment. Rebeckah has grit and gratitude. She says, "For me, Bethlehem Inn was the most perfect place to start a whole new life." Which is exactly what she and her kids have done.

Please consider donating today <https://bethleheminn.org/donate/donation-form/>

*This incredible story
of success was made
possible by YOU!*

Meet our Board of Directors!

- Megan Burgess, President
- Mike Bonetto, Vice President
- Kevin Link, Secretary
- Jill Craveiro, Treasurer
- Tammy Baney
- Howard Friedman
- Riley Hayes
- Mark Huffman
- Rev. Dr. Steven Koski
- Lauri Miller
- Jane Munagian
- Dan Stevens

It's Not Just What We Do It's How We Do It Together

Thank You!

Spotlight on Homelessness

Your support helped the Inn fundraise over \$200,000! We are truly inspired and in awe of your generosity and desire to help people in crisis!

If you missed the event or would like to watch it again, you can view it on the Inn's website.

<https://bethleheminn.org/news-events/>

Thank you for your compassionate and giving heart!



We're Hiring!

Please visit our website for a list of available positions.

<https://bethleheminn.org/employment-opportunities/>

Please Help Us Meet Some of Our Urgent Needs!

We are so grateful to our community of supporters for helping in this time of need!

- Laundry Detergent (High Efficiency - Liquid)
- Sunscreen
- Lip Balm
- Warm weather clothing
- 33 gallon trash bags
- Bottled Water
- Backpacks



Volunteers!

The Inn would like to thank you for your service and patience! COVID has made your impact more apparent than ever. The dedication, time, and the extraordinary hearts of our volunteers have been a driving force for positivity and good work in our community. Your presence and smiling faces have been sorely missed.

In the upcoming months, Bethlehem Inn is reintroducing limited in-person volunteer opportunities to the community. New and returning community members will be asked to volunteer with vaccinations for COVID-19 as a means to keep our population healthy. We are so looking forward to a safe and collaborative return.



If you or a friend is interested, please email Jordon at volunteer@bethleheminn.org

"Act as if what you do makes a difference. It does."
-William James