



"The Essence of Life is to Serve Others and Do Good"

- Aristotle -

Spring 2020 Newsletter

Dear Friends,

Happy Spring!

This special newsletter is dedicated to celebrating our volunteers, who are truly the heart of our organization. While these unprecedented times called for us to temporarily suspend volunteer service at the Inn, we can't wait to see the return of "old" times and our volunteers EVERY day!

All of our supporters have extraordinary hearts, and ***we are grateful to have your help in transforming lives with shelter, help, and hope each and every day.*** After all, Bethlehem Inn was founded by a group of dedicated volunteers from several local churches back in 1999. Since then, volunteers have been integral to the organization and the culture of compassion, dignity, accountability and integrity we strive to embody.




April is National Volunteer Appreciation Month during which we typically host an appreciation event to share our gratitude with all the volunteers serving Bethlehem Inn. This year, while we are not able to gather in person to honor our volunteers, ***we are more appreciative than ever for all of their compassion, love and support***—through good times and bad.

It is because of our extraordinary volunteers that we were able to serve **122,465 nutritious meals last year to 1,180 individuals, parents and children experiencing homelessness.** All those nutritious meals take time and dedication from our incredible meal groups. And that's just one of the many ways volunteers support the Inn on a daily basis. Collectively **volunteers dedicated 15,000 hours in 2019 at Bethlehem Inn** by preparing and serving those crucial meals, helping at the front desk, laundering bedding and linens, sorting and organizing in-kind donations, preparing sack lunches daily, helping with data entry and office tasks, and doing it all with extraordinary heart!

At Bethlehem Inn we believe, as Aesop shared eons ago, "No act of kindness, no matter how small, is ever wasted," and we are grateful for all of your acts of kindness, big and small. Volunteers are at the core of Bethlehem Inn and we would not be able to transform lives without you!

In Gratitude,



Courtney Gallant Bathke

Extraordinarily ~~INN~~comparable!

Most home cooks dream of the “perfect” kitchen: all the newest appliances, gadgets, and cookware. In the fall of 2018, after four years of cooking for Bethlehem Inn, the 60 volunteer cooks organized by Newcomers Club of Bend (NCOB) began preparing meals in the Inn’s new commercial kitchen.

The transition was exciting and challenging. Everything seemed BIG and COMPLICATED. But under the patient and enthusiastic guidance of Kitchen Manager Dale Fox, the teams were soon at ease with commercial equipment and Health Department standards. Wearing their special INNcomparable Cook’s aprons, they cheerfully serve over 100 meals every month.



For nearly six years, the INNcomparable Cooks, who cook as members of four teams, have planned menus and shopped for ingredients and supplies. Each team prepares and serves over 400 meals annually. What inspires this level of generosity and service? Joan Goodwin & Kathy White, who serve as overall co-chairs for the teams notice the satisfaction team members feel: “When we interact with the Inn’s residents, we see how grateful they are for a tasty meal. We are so fortunate to have the Inn in our community. It is an honor and pleasure to serve those who are going through a very difficult time.”

Newcomers Club of Bend (NCOB) is a busy organization helping women build friendships and community involvement through a variety of social and volunteer programs. The majority of its 300 members give countless hours and funds to Central Oregon’s non-profits. **“What better way to make new friends and learn about the community we live in than to volunteer”** notes Kay DuBois, former NCOB president.

Another *SUCCESS STORY* made possible by YOU!

Angel's Story

By the time Angel Mullins, mom and U.S. Army Veteran, arrived at Bethlehem Inn, she was ready to give up. Ready, she says through tears, to hand her kids over to social services. She had hit bottom hard when the two younger kids who were with her asked, “Will we ever be warm again?” The Inn staffer who welcomed her was compassionate but clear: “No, Angel. You’re not going to give up. WE’RE not going to give up.” Angel says, “It was a huge turnaround.” Angel had come home to Central Oregon after escaping an abusive relationship. She was working hard but just couldn’t afford to make ends meet and could find no place to live that she could afford. She and the kids lived in a hotel. They lived in a tent. In a motor home. In their car. Winter was coming on. Then came that wrenching question, “Will we ever be warm again?”



Desperate, Angel came to Bethlehem Inn. There were rules and structure. But her family was safe, warm and fed. Angel says, “My case manager was the most amazing woman I’ve ever met.” She laughs now as she recalls, “At first, I thought she was mean. But no. She’s honest...and she’s real. Exactly what I needed.” Inn staff helped her connect with benefits she didn’t know were available. Angel found a job. With help from Inn staff and HUD, she found a home. Angel says she will return to the Inn...to volunteer.

Your support helps people just like Angel get back on their feet. Please donate today by visiting bethleheminn.org/donate/donation-form/



SPOTLIGHT ON HOMELESSNESS

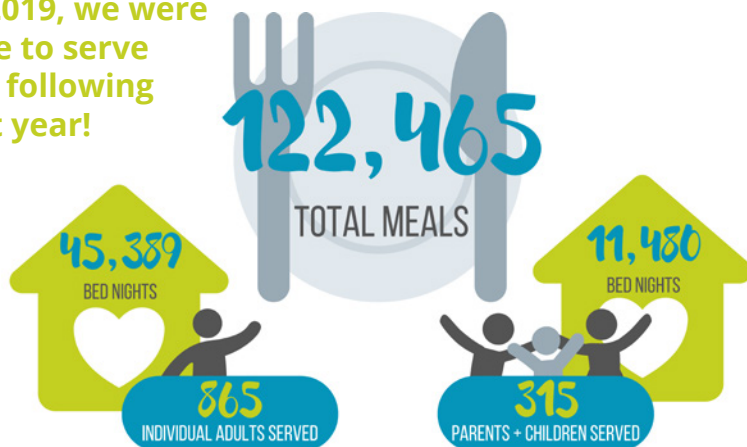
If you weren't able to join us on May 19 for our virtual fundraiser you can view the recorded version on our website! Please visit <https://bethleheminn.org/spotlightonhomelessness/> to replay the event. If you would like to make a donation please visit tinyurl.com/donate-spotlight

EXTRAORDINARY HEARTS Volunteer Appreciation

While we are not able to celebrate together at the exciting **Extraordinary Hearts** event we planned for volunteers, we invite you to view a video dedicated to our beloved volunteers.

Please watch and enjoy by visiting: https://www.youtube.com/watch?v=cjSfYV_Zo7M

**With your help
in 2019, we were
able to serve
the following
last year!**



Meet our Inn's Dedicated BOARD OF DIRECTORS!

- Howard Friedman, President
- Megan Burgess, Vice President
- Mike Bonetto, Secretary
- Jill Craveiro, Co-Treasurer
- Rene Kesgard, Co-Treasurer
- Tammy Baney
- Mark Huffman
- Rev. Dr. Steven Koski
- Glenn Kotara
- Kevin Link
- Lauri Miller
- George Myers
- Dan Stevens

Meet GEORGE!

Age is just a number for our extraordinary volunteer, George. At 90 years young he commutes to Bend every Tuesday to complete his "honey-do" list... but before any errands George always comes to the Inn to prepare sack lunches for residents with his volunteer partner, Rudy.



We love seeing his smiling face each week, and we're fortunate to have had George volunteer with us for the last 10 years, and counting! Thank you, George, for your decade of service and your lifetime of generosity toward others!

IT'S NOT JUST WHAT WE DO, IT'S HOW WE DO IT TOGETHER!



JOIN US and GET INVOLVED!

As a community-based organization, Bethlehem Inn values volunteerism and encourages community members interested in helping us transform lives with shelter, help and hope.

Unfortunately, these challenging times have required the Inn to temporarily suspend our volunteer program for the health and well-being of our volunteers, residents and staff.

However, we're looking forward to brighter days, when we get to see our amazing volunteers and the return of our robust volunteer program! We encourage you to reach out to Courtney at volunteer@bethleheminn.org or 541.322.8768 ext. 11 to learn more.

THANK YOU SO VERY MUCH FOR TRANSFORMING LIVES WITH US!

COVID-19 RESPONSE

Bethlehem Inn remains committed to providing a safe place to stay for the adults and children in Central Oregon amidst the COVID-19 crisis. In response to the coronavirus, we are following the most current directives and recommendations from our public health and government authorities.

The Inn is modifying some of our work practices to enhance the health and safety of our staff, residents, volunteers and community members.

Your support is especially critical during these devastating times! People without a home are already susceptible to illness, weather, exhaustion and malnutrition. Regardless of age, many people served by the Inn are considered medically at-risk.

The Inn must continue to provide life-saving services for our community's most vulnerable, so please help us and donate today by visiting bethleheminn.org/donate/donation-form/

Help Us Meet OUR ESSENTIAL NEEDS

We are so grateful to our community of supporters for helping in this time of need! Our most urgent needs at this time are:

- Toilet Paper
- Hand Sanitizer
- Disinfecting Wipes
- Cloth Masks
- NEW Sleeping Bags
- NEW Backpacks
- Deodorant
- Hand Soap
- Disposable Razors

To ensure the safety of our donors, residents and staff during this time, donations can be purchased online and shipped to us (at the address below) or dropped off outside our main entry for no-contact donating.