

SHELTER HELP HOPE



BETHLEHEM INN
Spring Newsletter 2024

JOHN'S STORY OF HOPE

Hello, my name is John. I'm a 38 year-old U.S. Marine Corps Veteran. I've utilized five various homeless shelters within the last 10 years. In 2014, I stayed at my first shelter, Salvation Army in Pensacola, FL. I stayed at Bethlehem Inn in 2015, 2016 and 2023.

I have five compassionate siblings, loving parents and other willing friends and family. None could have supported me with the accountability, supportive structure, and community that Bethlehem Inn supported me with.

If someone finds themselves housing insecure, Bethlehem Inn in Bend, OR offers Ritz Carlton quality as compared to other shelters. Bethlehem Inn must rank as one of the best homeless shelters in the world!

I love Bethlehem Inn



If you would like to support stories like the one shared by John, a gift of compassion can be made directly to Bethlehem Inn.

[Click Here to Donate](#)





We Love our Volunteers

April is Volunteer Appreciation Month and we really love our volunteers. The crucial services provided to Inn residents is only possible because of YOU!

In 2023, Bethlehem Inn **volunteers contributed 10,603 hours of service**, with around 375 unique volunteers during that same time period. Together, we are making a difference not only at Bethlehem Inn, but in Central Oregon.

We can always use more compassionate individuals in our kitchen, at our front desk, and in our donations room (especially on weekends!). If you are interested in becoming a volunteer and being part of the solution, it's incredibly easy. We have weekly orientations to get started. You can sign up for an orientation [HERE](#), call Jordon at 541.322.8768x11, or email him at volunteer@bethleheminn.org

Start your Volunteer Journey
Today



UPCOMING SUMMER EVENTS



Bethlehem Inn is hosting the first volunteer appreciation event we've had in over 4 years at Aspen Hall on July 26th! We are so appreciative of all of the work you put into this organization, we hope you can join us this summer!

We will have food, drinks, and games - so come hungry for good burgers and healthy competition.

If you would like to come, please reserve your spaces online [HERE](#) or contact Jordon at volunteer@bethleheminn.org



This August Bethlehem Inn is collaborating with LayitOutEvents at the trail race known as the Haulin' Aspen. Together we are raising awareness of the amazing work being accomplished at Bethlehem Inn. If you are interested in supporting our mission, a portion of the entrance fees will directly support the Inn and you can sign up for the race [HERE](#).

If you are interested in supporting the event in other ways, we need volunteers! You can learn more about volunteering at this event by reaching out to Jordon at volunteer@bethleheminn.org

VOLUNTEERS SHARE THEIR EXPERIENCE

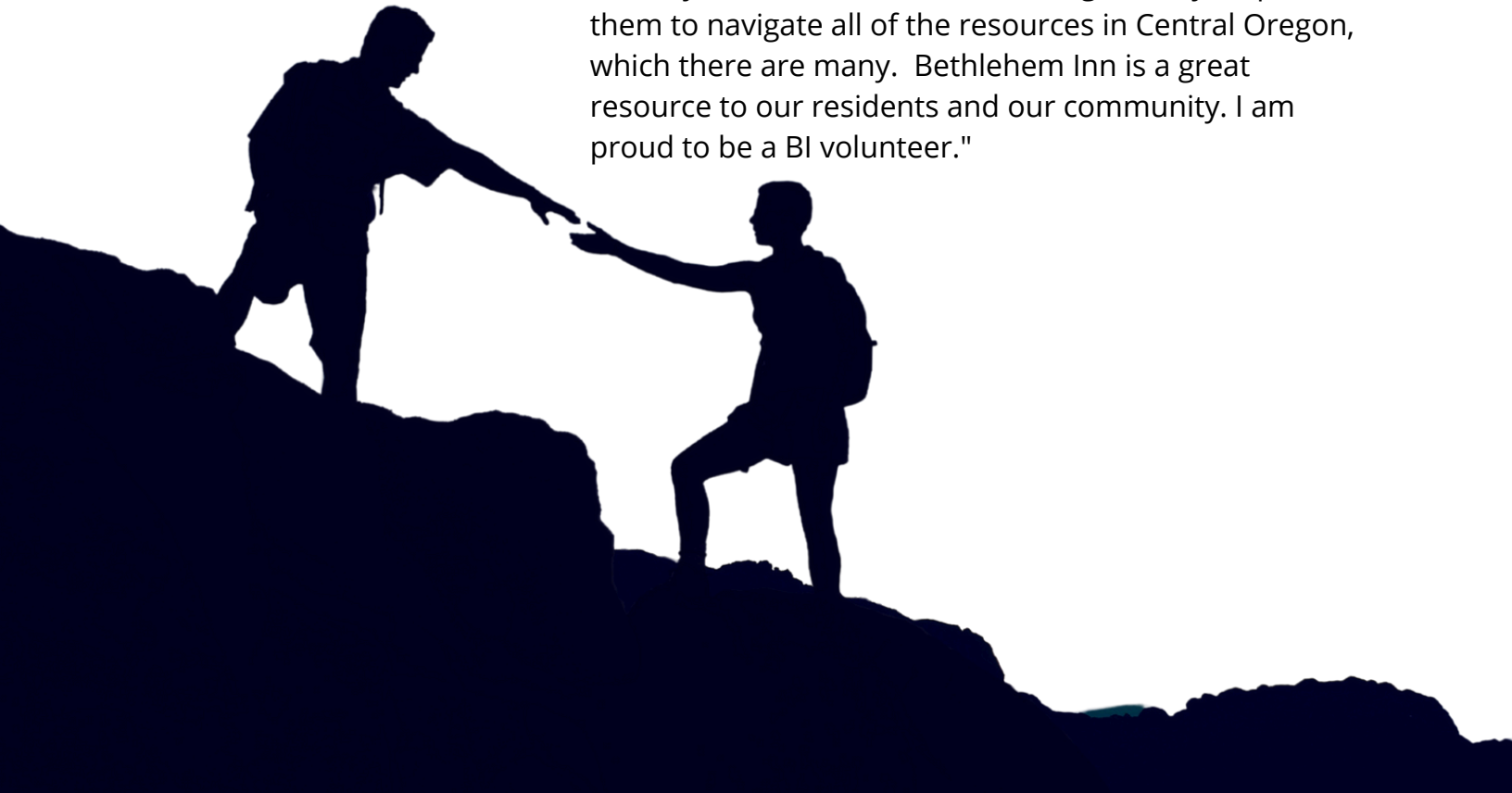


Pete S.

Front Desk Volunteer
Bethlehem Inn

"I have been a volunteer at the front desk at Bethlehem Inn for ten years. The front desk volunteers interact with the residents, handle donations and phone calls and interact with the staff regularly. From day one through today, I have always been impressed with the compassion and professionalism of the staff. The Inn and staff have always been welcoming and compassionate to all who come to the Inn. We see residents of all age groups from newborns to the elderly, from all walks of life, genders, races, etc. They are all treated the same.

Our residents come to the Inn for many reasons - but the basics are a warm safe place to sleep, meals, showers and to be able to take a deep breath to reset. Our staff works with each resident in the same way, working to establish a plan to move forward, assisting our residents by helping them to find housing, employment, obtaining basic documents such as social security cards, driver's licenses and generally helps them to navigate all of the resources in Central Oregon, which there are many. Bethlehem Inn is a great resource to our residents and our community. I am proud to be a BI volunteer."





Patrick R.

Front Desk Volunteer

Bethlehem Inn

"Some preachers and politicians alike speak the things that matter and that has its own value but the people at Bethlehem Inn do the things that matter and that has its own reward."

beatitude - Patrick R.

the acquisition of immense power and riches
breeds its own community of dominance and reign
but i long for the reign of the humble
quieting the voice of the boastful
and enjoying at last
the tenacity of the strong of principle
though meek in their speech
illuminating the value of empathy
and the meaningfulness of all humanity
it will be decency that saves us, it will be disregard
that ends us
for love is nomadic
it must continue to move to unconquered places
it must move from its own community of inclusive
thought
to its conviction of administration of social equity
coming from pureness of heart as we pursue
goodwill and peace
this is where our blessing will come from
as we heed the spoken words of the mysterious
nazarene orator of the ages
it is our promise of beatitude

BETHLEHEM INN REDMOND COMMUNITY HOUSING

(BIRCH)



The continued difficulty in the accessibility of long-term, affordable housing for vulnerable populations compelled Bethlehem Inn to further its mission and make a more significant impact on breaking the cycle of homelessness. This guided to the decision to transition from emergency, short-term shelter at the Redmond location to a longer term, clean and sober housing option.

Bethlehem Inn Redmond Community Housing (BIRCH) Program was developed to help break the cycle of homelessness.

With the commitment and understanding of working with individuals that are experiencing homelessness, this program offers a safe and secure place for those who need a supportive environment in maintaining their sobriety and recovery. By providing a longer term housing choice option that focuses on well-being and sobriety with an emphasis on sustained recovery, BIRCH can be the opportunity that will help build a foundation for future success. Having a stable and safe place to live is one of the major dimensions that support a life in recovery. With the focus on populations with higher vulnerabilities, BIRCH works to provide supportive services and access to other types of collaborative partnerships that actively encourage linking residents to resources in the community.

BIRCH promotes four major dimensions that support a life of self-sufficiency and transformation. These include Health and Wellness, Stability, Purpose, and Community. Residents meet regularly with case management staff to establish goals in these areas, along with other opportunity areas to rebuild their lives.



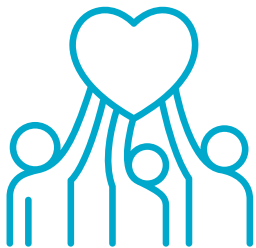
Health and Wellness—BIRCH is where residents will learn to create a life in recovery, such as overcoming or managing their substance use—for example, abstaining from use of alcohol, illicit drugs, and non-prescribed medications—and making informed, healthy choices that support physical and emotional well-being.



Stability—Community housing provides residents a stable and safe place to live. Persons with substance use issues often return from treatment and institutions to living environments that enable addictive lifestyles.



Purpose—BIRCH encourages residents to work, go to school, volunteer, and explore other meaningful daily activities. Through comprehensive case management and connecting with resources, individual purpose is explored. BIRCH creates a function within the facility where residents share mutual aid, reciprocal responsibilities, chores, and leadership and/or governance roles.



Community—BIRCH strives to cultivate community relationships and social networks that provide support, friendship, peer accountability and hope. The support of the community is a critical aspect in achieving and sustaining recovery.

DIVERSE NEEDS, EQUITABLE SOLUTIONS: **NAVIGATING INCLUSIVITY IN SHELTERS**

As we approach holidays that celebrate the rich tapestry of human diversity, such as National Family Month, Juneteenth, and Pride Month, it's an opportune moment to reflect on the importance of recognizing and honoring diversity within emergency shelters. These occasions remind us of the varied experiences, identities, and backgrounds that make up our communities, underscoring the need for shelters to provide equitable support to all individuals seeking refuge. In the spirit of these upcoming celebrations, it becomes increasingly evident that fostering inclusivity within emergency shelters and amongst community partners is not only a moral imperative, but also a practical necessity for effectively serving diverse populations in times of need.

National Family Month (June)

Families can take on many different looks: single or coupled parents; single or multiple children; grandparents raising grandchildren... Regardless of their composition, all families are centered on supporting each other and growing into health, happy and productive members of the community. Bethlehem Inn is honored to support them in their journey.

Bethlehem Inn is able to provide safe housing for up to 10 families on any one day. We connect them to family resources as needed including: Bend La Pine School District; Family Access Network; Family Resource Center of Central Oregon; and MountainStar Family Relief Nursery.

Pride Month (June)

Central Oregon has a strong LGBTQIA+ community, and Bethlehem Inn is proud to work with service providers to increase awareness and promote equitable services. Having a space to feel safe and move toward housing stability is important for everyone, and especially for individuals in minority groups.

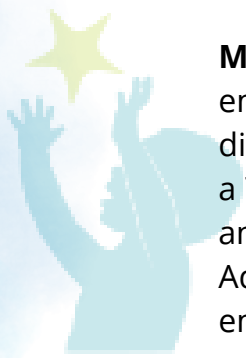
BI believes in diversity, equity, and inclusion, we welcome members of any minority group with open arms, regardless of sexual orientation or gender identity. All are welcome here!



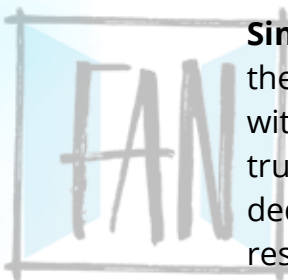
CHILD ABUSE PREVENTION MONTH (APRIL)



In times of crisis, partnerships with organizations like KIDS Center play a pivotal role in ensuring comprehensive support for individuals and families seeking refuge in emergency shelters. **KIDS Center's** expertise in addressing the sensitive and complex issue of child abuse makes them a valuable ally in providing specialized care for vulnerable children and families affected by trauma. Their range of services, from medical evaluations to mental health support, not only addresses immediate needs but also contributes to the long-term healing and well-being of those impacted by abuse. Moreover, the fact that all of KIDS Center's services are offered free of charge ensures that financial barriers do not hinder access to critical care for families in crisis.



MountainStar Family Relief Nursery, formed in 2001, is a vital partner for emergency shelters due to its comprehensive services tailored for distressed families with very young children in Central Oregon. They offer a Therapeutic Early Childhood Program (TECP) with age-specific classrooms and a Safety Net Program for high-risk families not enrolled in TECP. Additional services like child assessments, home visits, transportation, emergency food, and mental health support further enhance their ability to meet diverse needs. MountainStar's dedication to supporting families in crisis aligns closely with the holistic approach needed in emergency sheltering, making them an essential ally in providing comprehensive care and support to vulnerable families.



Similarly, the mission of **Family Access Network (FAN)** aligns closely with the holistic approach necessary in emergency sheltering. By operating within public schools across Central Oregon, FAN has established itself as a trusted resource hub for families facing various forms of hardship. Through dedicated advocates, FAN connects children and parents with vital resources such as food, shelter, healthcare, and more, addressing not only immediate needs but also providing pathways to long-term stability. As community partners, FAN's extensive network and commitment to supporting families in need complement the efforts of emergency shelters by extending their reach beyond shelter walls and into the broader community, ensuring that families receive comprehensive support to thrive in both crisis and beyond.

LOCAL SCHOOLS GIVE BACK

If you follow our social media, you have seen the incredible donations from the Terrebonne Community School and Saint Thomas Academy of Redmond. Saint Thomas Academy raised \$2,082.47 through a change drive and the Terrebonne Community School made 33 blankets and donated canned food and hygiene products as well.

Thank you Saint Thomas Academy and Terrebonne Community School!



Terrebonne Community School donates blankets, food, and other goodies.

Jordon, our volunteer and communications manager, speaking at St. Thomas Academy of Redmond.

CHECK US OUT ON SOCIAL MEDIA TO STAY UPDATED ON EVERYTHING GOING ON AT THE INN!

