



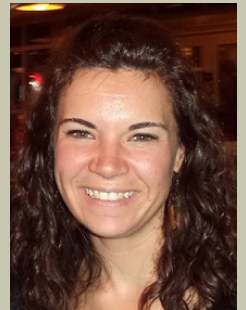
**It's not just what we do, it's how we do it together!**

## Winter 2017 Newsletter

Dear Friends,

We've all seen a lot of growth and change in our community since I joined the Inn seven years ago. But in spite of all the change, your support has been the one thing we have been able to count on! Because of you, we are all able to experience the many celebrations along with the numerous challenges facing families experiencing homelessness in our community.

The privilege of working with parents and children through the darkest times may seem overwhelming, but it is truly a gift and ultimately, very fulfilling. Every family that stays at Bethlehem Inn is different...different needs, different story. Yet, the shared experience of wanting to provide safety and security for their children creates a common bond.



Unfortunately, having to tell families that there is "no room at the Inn" happens far too often. As our population here in Central Oregon grows, so does the need to help families experiencing homelessness. Our limited space that currently accommodates only five families on any one night has become an increasingly difficult challenge. Luckily, because of you there is hope! Construction of our new building is underway and is scheduled for completion next summer. This means we will be able to shelter twice as many families starting next year!

Community generosity is allowing Bethlehem Inn to expand our ability to provide shelter, help and hope to more families in Central Oregon. A very needed and welcome change! Please help us celebrate this accomplishment by joining us for our *Hopes and Wishes Day* on Sunday, December 10 from 2-4pm. More information can be found below.

I encourage you to continue supporting our program by donating today. And please take a moment to visit [bethleheminn.org/capital-campaign](http://bethleheminn.org/capital-campaign) to get more information about the exciting changes ahead.

Warm Holiday Wishes!

Liz Clemens  
Families First Program Manager



### Bethlehem Inn

3705 N Hwy 97, Bend OR / 541-389-2820 / [info@bethleheminn.org](mailto:info@bethleheminn.org)  
[Facebook.com/BethleheminnBend](https://www.facebook.com/BethleheminnBend)



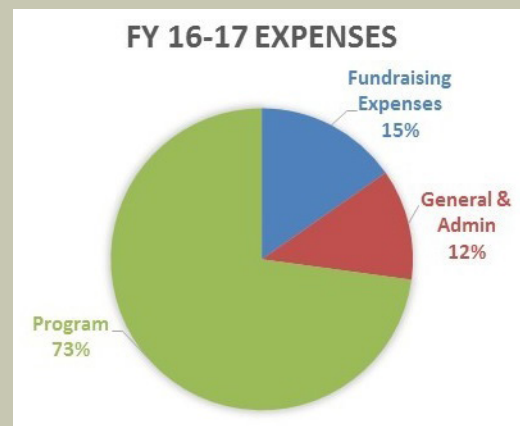
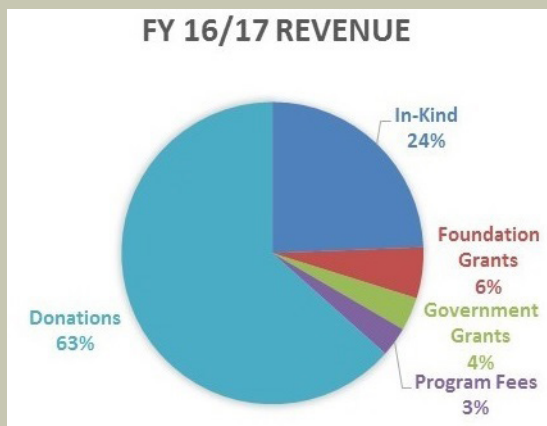
## FY 16/17 Outcomes:

We value your confidence in our organization and are pleased to share highlights from our recent audit for Fiscal Year 2016-2017 which ended on June 30, 2017.

- 100% of adults and children staying at the Inn received emergency shelter services.
- 29,170 nights of safe shelter were provided to 677 single adults, 80 parents and 117 children.
- 77,589 meals were served.
- 1,021 food boxes were provided to exiting residents and other people in need.
- 75% of residents have or gained employment, income and health insurance while staying at the Inn.
- 73% of each dollar received directly benefited residents.

## FY 16/17 Financials:

We celebrate you, your support and the impact you had on the people we served during our last fiscal year. You allow programs to continue, results to happen, lives to thrive, and stories to be told!



## Because of you, there is a reason to celebrate another step forward! Here's Susan Allen's Story...

Like every grandparent, Susan loves her three grandkids. They're teenagers... two boys and a girl. Like nearly three million other grandparents nationwide...a stunning statistic...Susan is raising the children alone. Well past retirement age, she does it with her Social Security check and modest government help for needy families. The kids' father disappeared and their mother is dealing with crippling mental health challenges. Earlier this year, Susan's marriage of many decades disintegrated. There is no spousal support. Susan and the teens suddenly found themselves homeless.

Susan reached out to Bethlehem Inn. She says she found "...a good port in the storm." Inn staff made sure the kids stayed in the schools they were used to. And while the teens did *their* homework, Susan did hers with guidance from Inn staff: searching for a place to live. "They gave me direction," comments Susan...and, "everyone at the Inn showed interest. Everyone knew my name." Susan's hard work, along with staff help and encouragement, have enabled grandma and the teens to find temporary housing while Susan continues her search for a permanent home. As she talks about the kids, her love for them shines through every sentence. Her hope: "I want them to make it. And be happy." About that hope and her own future, Susan feels optimistic...and grateful: "I wouldn't be where I am without Bethlehem Inn."



## Wish List

Your help is very much appreciated! **We are in urgent need of gift cards** that allow us to purchase specific items as the need arises, such as perishable food for our Emergency Meal Program.

Other needs:

- Baby Wipes
- Diapers (sizes 2-6)
- Gas cards
- Lunch meat
- Individually wrapped snacks
- Cereal
- Laundry detergent
- Toilet paper
- Paper plates, bowls and plastic ware

For a list of other items on our wish list please visit: [www.bethleheminn.org/donate/other-ways-to-give/](http://www.bethleheminn.org/donate/other-ways-to-give/)

## Hopes and Wishes



We are in the process of gathering the community's "Hopes and Wishes" for future families staying at the new facility, which is nearing completion! If you would like, please email yours to [stephanie@bethleheminn.org](mailto:stephanie@bethleheminn.org). Thank you for your support!

## Donation Hours -

We accept donations **Monday - Friday from 9am - 4pm**. If you have donations that you'd like to drop off outside of these hours, please contact Courtney at 541.322.8768 ext. 11 to schedule an appointment.

## Community Engagement Opportunities

Your help in preparing and serving meals for the adults and children staying at the Inn would be very much appreciated! There are several dates available.

Please visit [bethleheminn.org/volunteer/](http://bethleheminn.org/volunteer/) for a list of those dates and information on how to sign up to help. There are also opportunities to volunteer for shifts at our front desk. Please email Courtney at [volunteer@bethleheminn.org](mailto:volunteer@bethleheminn.org) for more information about volunteering!

## LunchBox Talks!

Bethlehem Inn will begin the 2018 LunchBox Talks!, a community education series on February 23, 2018 with an informal session about Bethlehem Inn and homelessness in Central Oregon.



This session is held at Deschutes Public Library Downtown Bend branch in the Brooks Room, 507 NW Wall St., Bend, OR 97701 from 12pm - 1pm. Registration is required. Please visit <https://tinyurl.com/bethleheminnlunchboxtalks> or call Courtney at 541.322.8768 ext. 11.

## Support the Inn through Amazon Smile!



Did you know that you can support the Inn through your online shopping with Amazon? Amazon donates 0.5% of the purchase price to us! Please visit [smile.amazon.com](http://smile.amazon.com) and support us every time you shop!

## Year-Round Giving

Your annual support is what sustains us throughout the year. Please make a gift of any size. Every penny makes a big difference in the lives of individuals and families staying at the Inn! If you are over 70 1/2 years of age, you can make a charitable gift from your IRA without counting those gifts as part of your adjusted gross income.







**Happy New Year from our house to yours!**

**We hope 2018 brings happiness and good health to you and your loved ones!**

## Words of Gratitude

"Liz - wanted to say thanks for all that the BI has done for my family. We were able to get on our feet and continue to take care of our family. The diapers, wipes, clothes and shoes were so much help you don't even know. It's nice to have something and someone like you to help the people in need. You and your staff have been awesome to my kids also. Again, thanks for all that you and the BI do!"

- Amber and Family (Former Resident Family)

"Without the BI I would never have had the solid foundation and support I needed to get sober and move on to my family and a blessed life. The staff is wonderful! Thank you from the bottom of my heart. God bless you."

- Ruth (Former Resident)

"Bethlehem Inn staff - just a note of appreciation for everything you've done for us. A special thanks to Liz, Chris and Tara for their one-on-one attention! I was a hopeless mess when we checked in here and now I'm a hopeful mess (more or less)! You treated us with respect and a genuine concern about our situation. You didn't judge me about how I got here, but encouraged me on where to go from here. Having a secure place to sleep and eat each night is a huge burden lifted. That alone is a big step in helping us out of homelessness. My boys and I will always be grateful for your help. We've been blessed!"

- Rusty, Sam and Joey (now Former Resident Family)

